



Sainty 100 series aluminum crank window

Full Name: Crank window with outdoor opening +2 sealing locks 100mm wide + emovable invisible screen



National classified sales top one

North American high-rise designated windows

Safest balcony window

3 channels seal +2 silent locks (patent)

High transmittance removable
PET window screen

Pass American AAMA Canadian
+CSA standard test





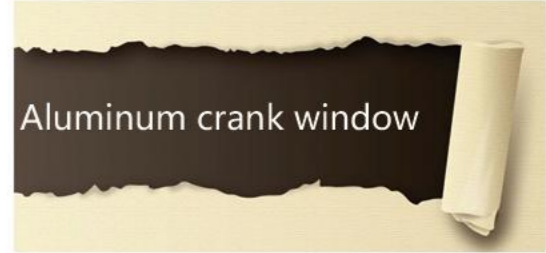
SAINTY 5S level safety curtain wall crank window system. Window is made of large and thick materials, because only large and thick solid materials can pass the harsh test standards in North America. In terms of sealing performance, the best three-way sealing is adopted.

Sealing locks are additionally installed on both sides, so as to ensure better sound insulation and waterproof performance.

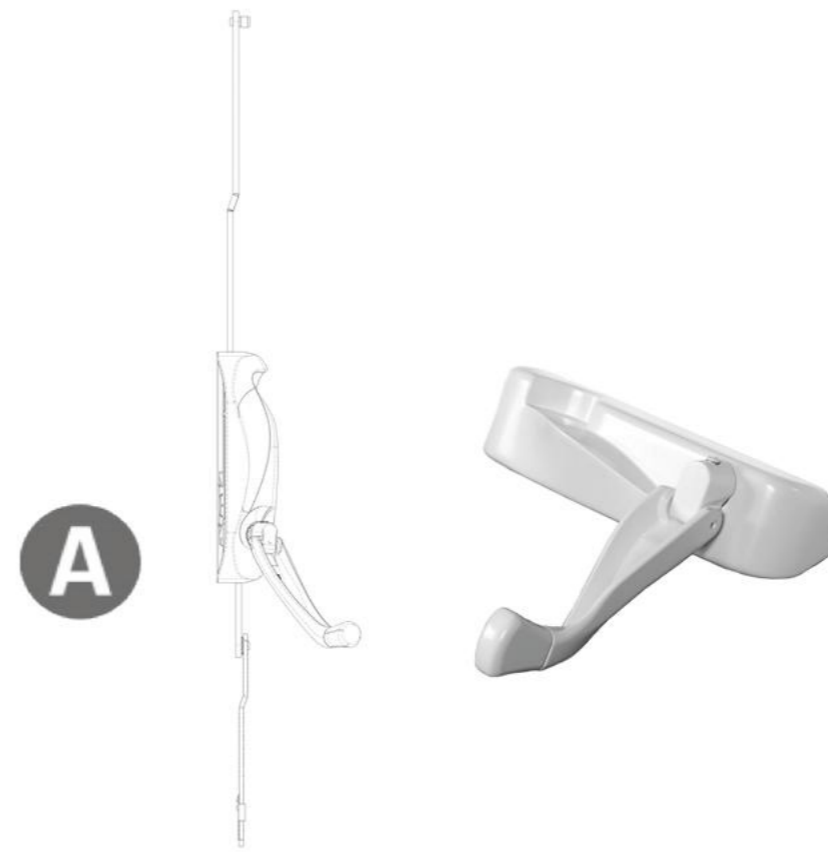
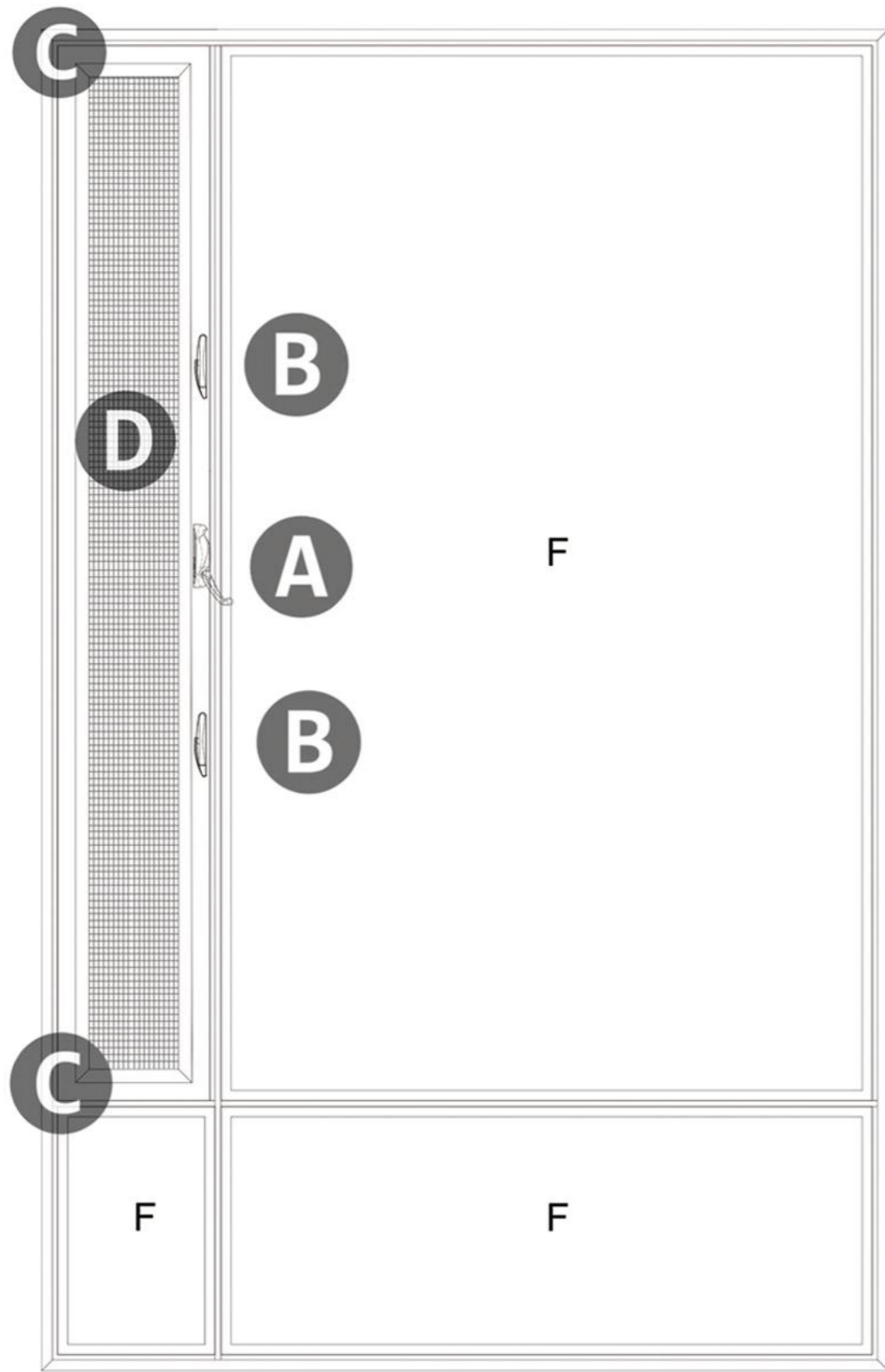
The safest balcony window is a hand-operated window. The reason is that it is driven to the window sash through the hand-operated device. You don't need to reach out of the window to achieve 5S level safety. This design is especially suitable for users with elderly and children in the family.

Indoor gauze screen can block the entry of mosquitoes, and the gauze screen fan is designed as an independent part, which can be disassembled and cleaned when necessary.





Interior View



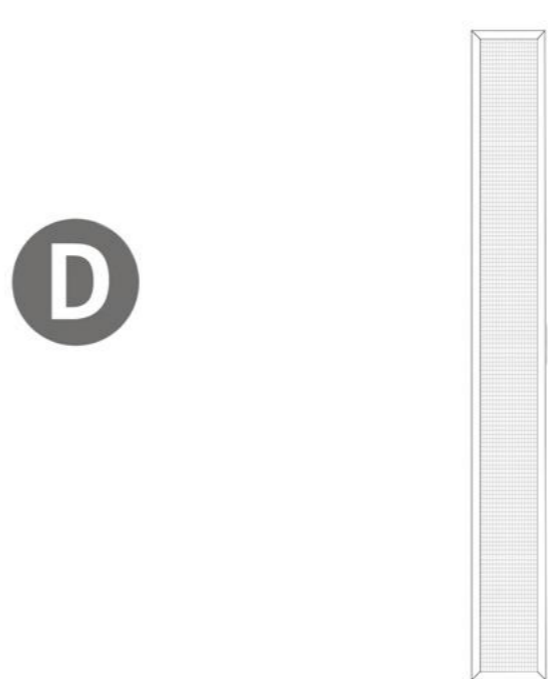
Window Crank Operator



Multi-Point Lock

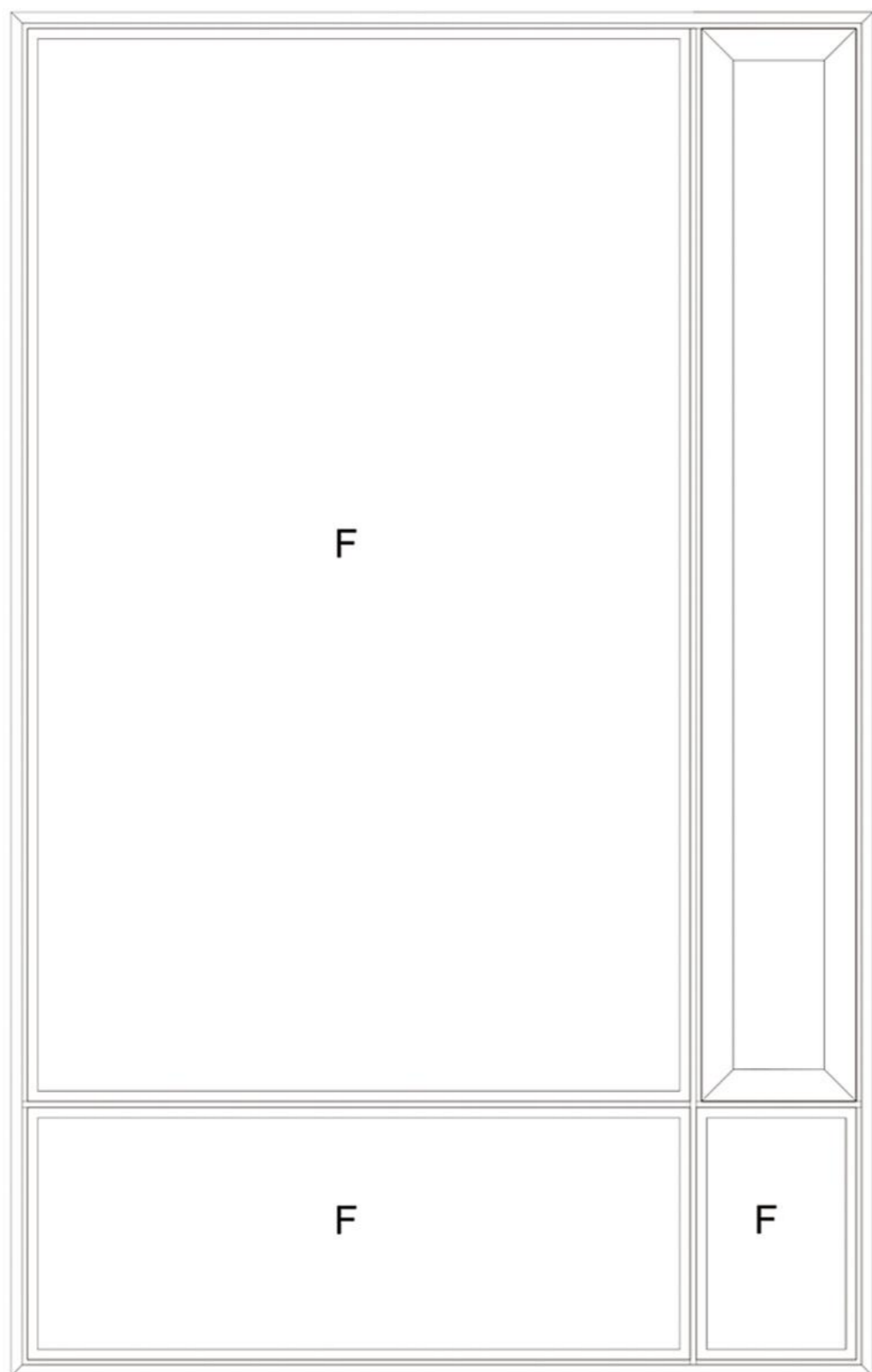


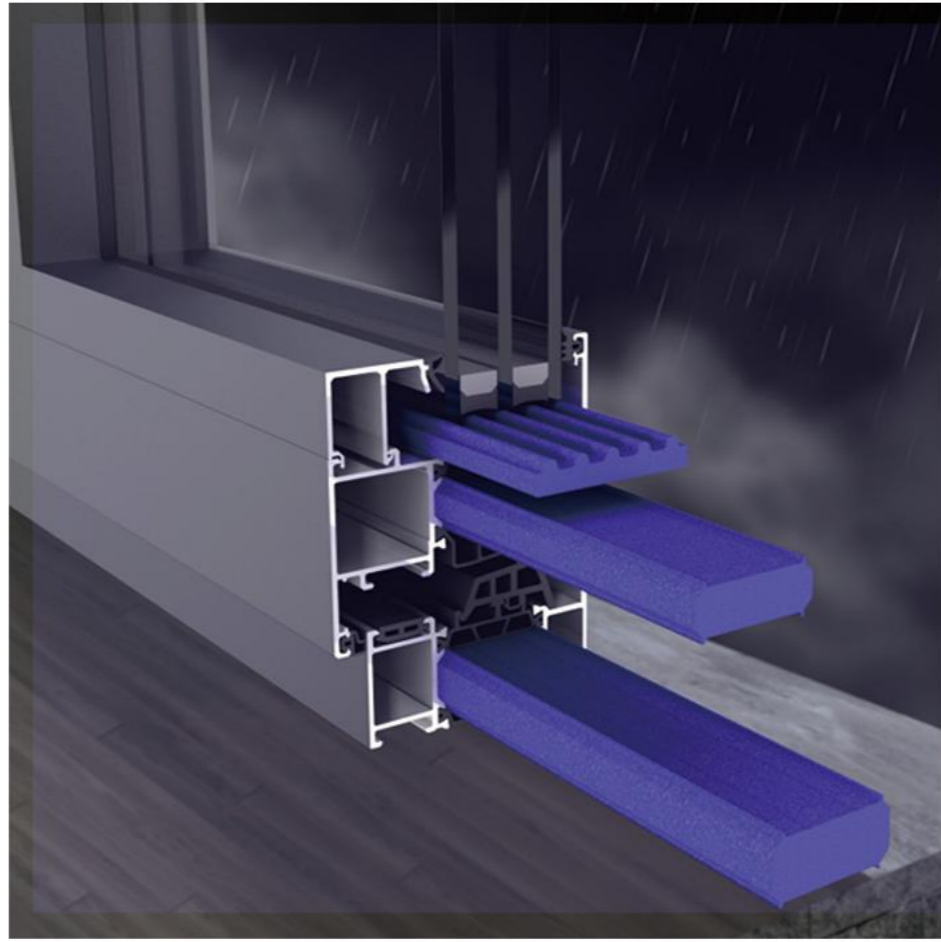
Wind Bracing



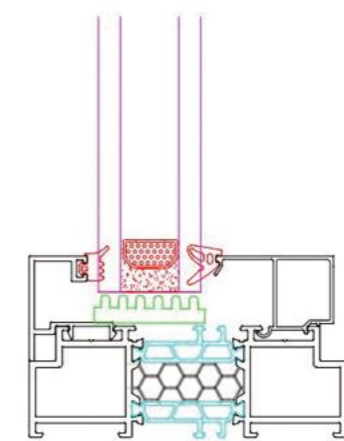
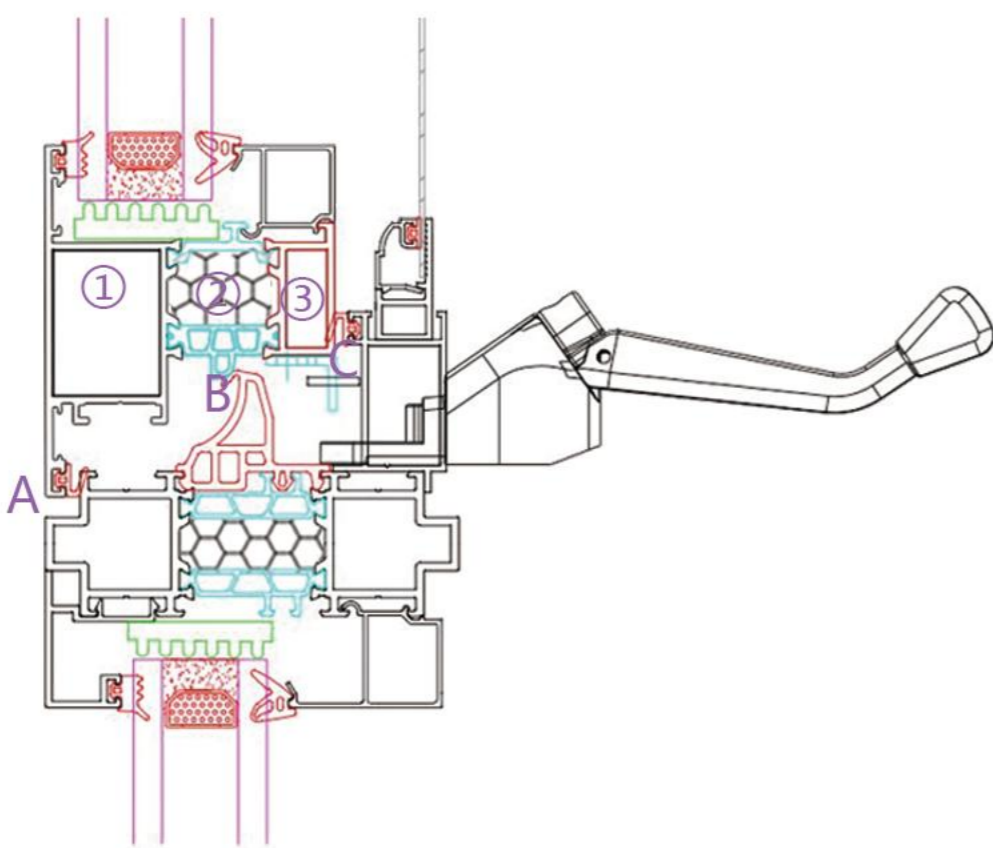
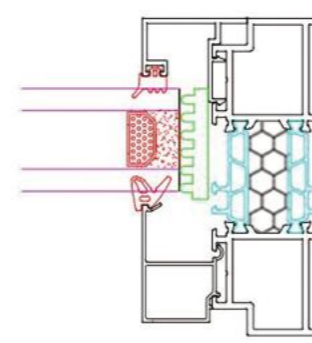
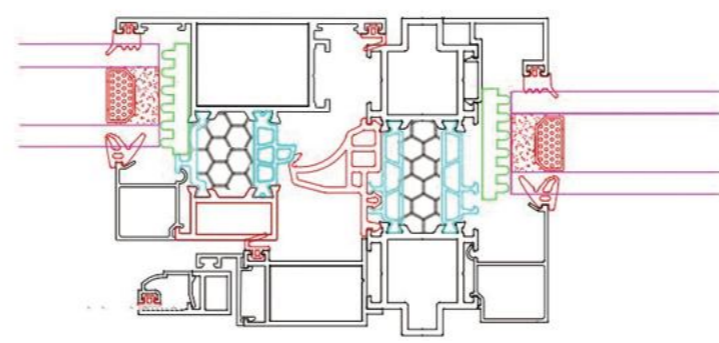
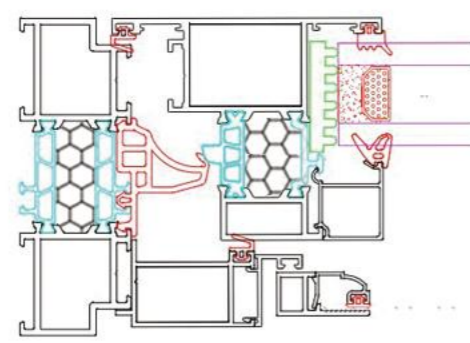
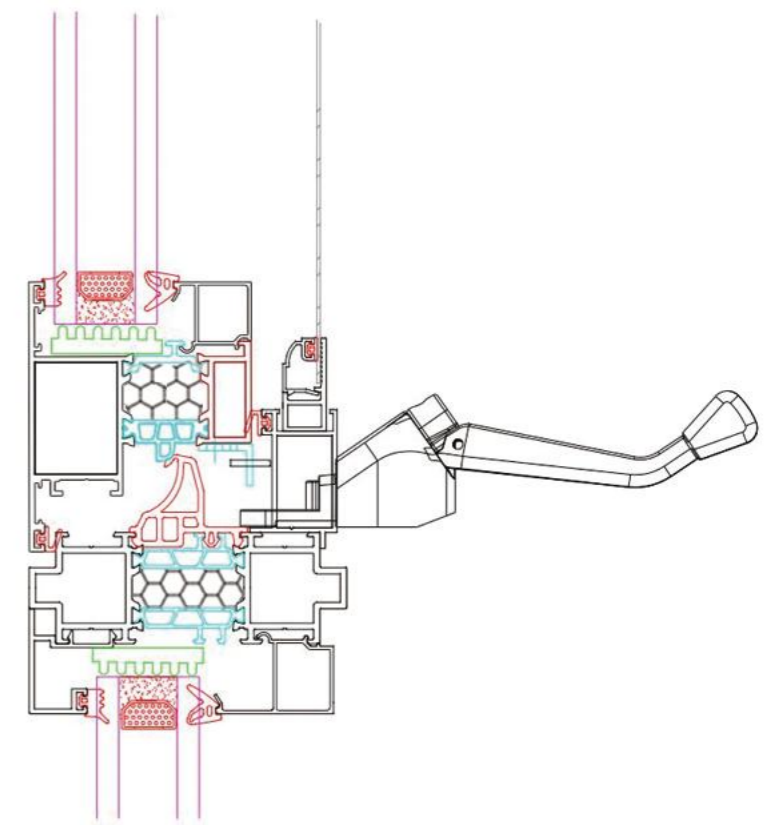
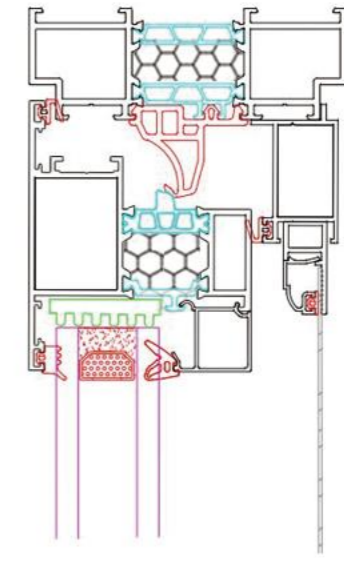
Removable Invisible Screen Window

Exterior View





Inside view



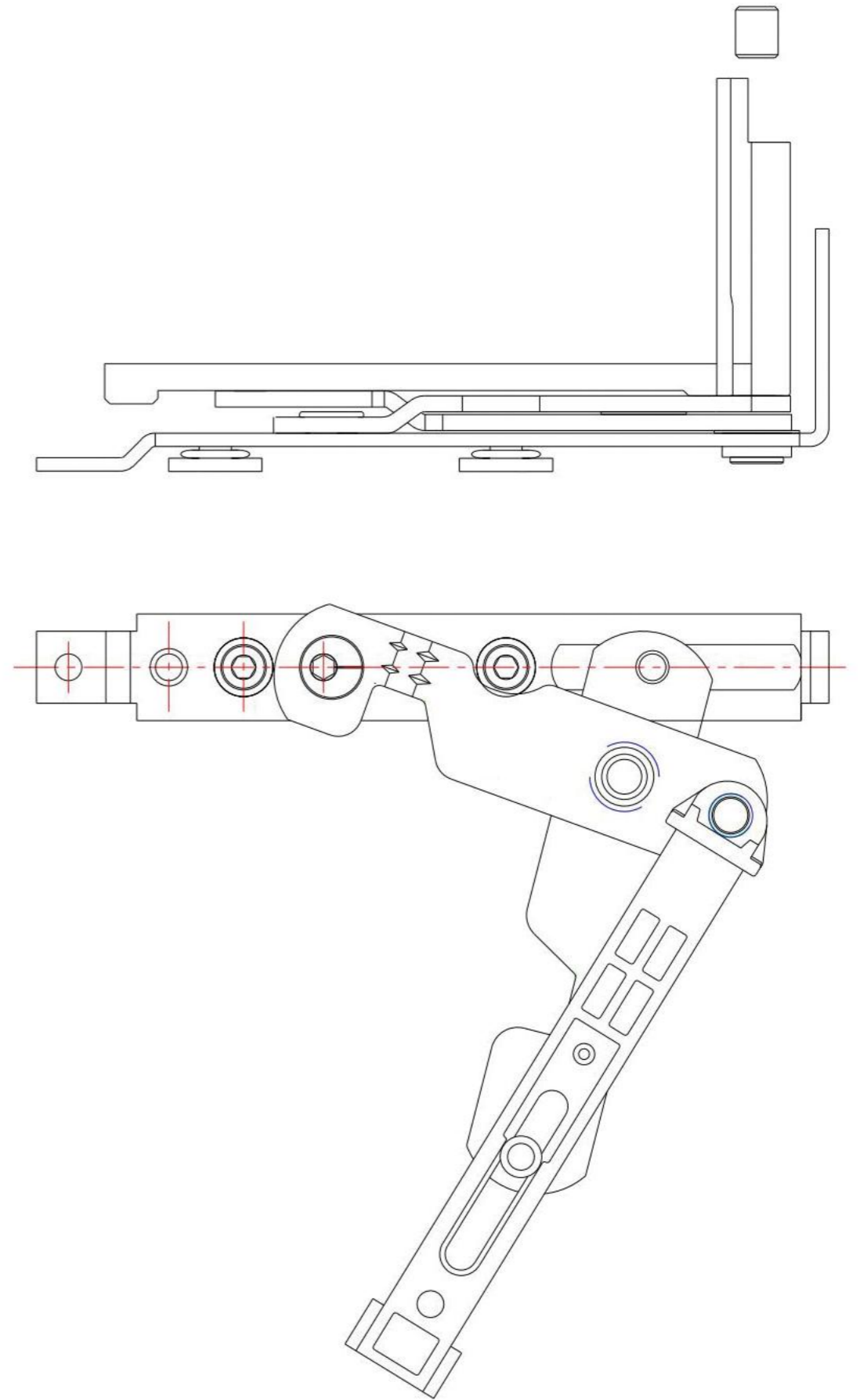
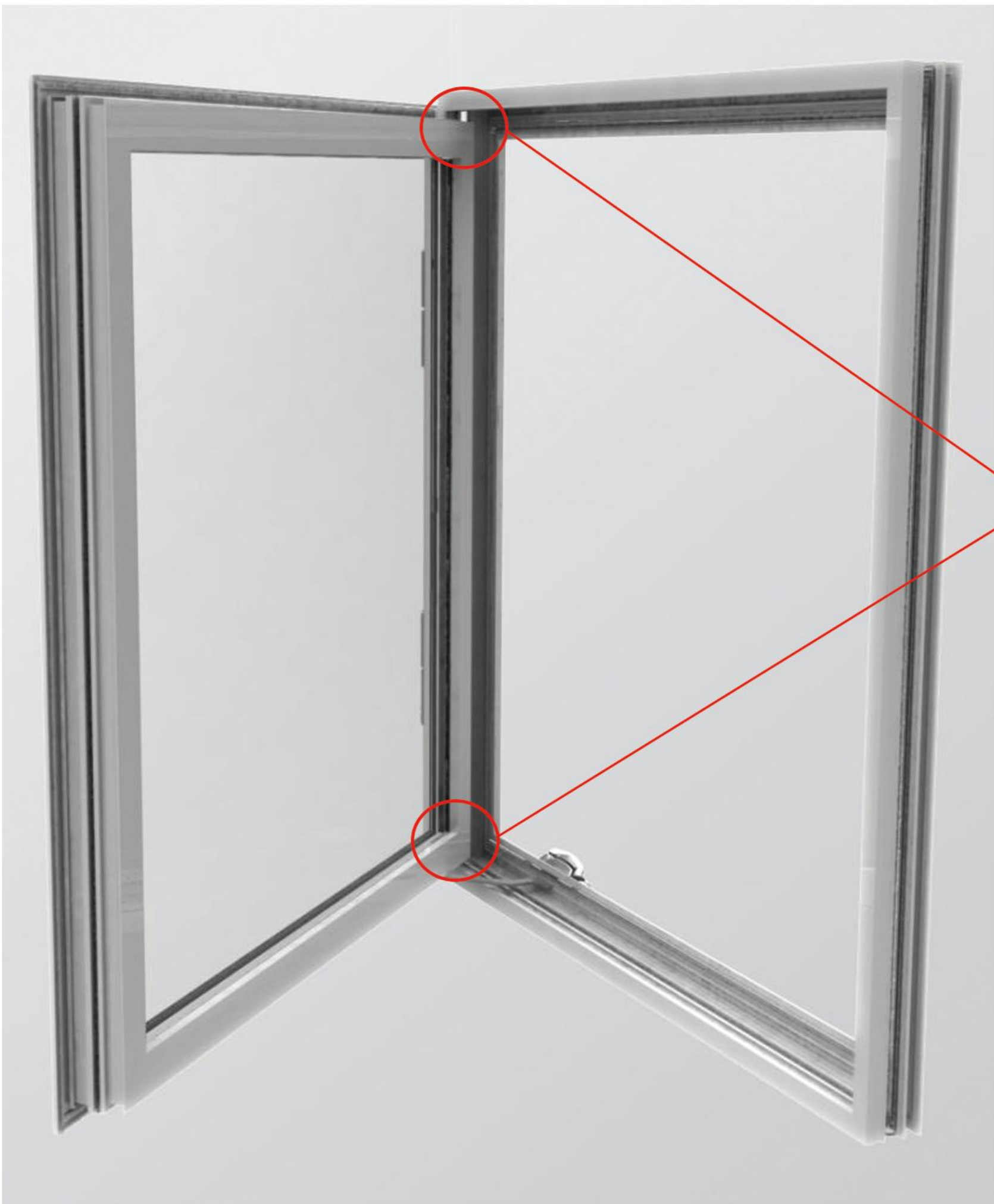
1. ①②③ is the sound insulation cavity part, ① is the middle of the aluminum material for air, ② is the plastic foam, ③ is the middle of the aluminum material for air, by increasing the medium and cavity structure to achieve the effect of sound insulation and heat insulation.

2. ABC is the waterproof part, and A is the closed part of the outer window frame and window sash. B is the intersection point of isobaric rubber strip (EPDM) designed inside window sash and window frame with heat insulation strip (PA) to form a certain enclosed space. C is the closing part of the inner screen window frame and sash. If it is A rainstorm outside, water may enter from the gap at point A due to the pressure, and the red arrow part of the barrier at end B will be opened as the drainage hole of the door and window to drain water. In the event of extreme weather the C-terminal





Super Smooth&Heavy Duty



- ◆ Left and right, complete set (one left and one right) for European standard C notch profile flat window hidden hinge.
- ◆ All stainless steel design, can be used for fire resistance design.
- ◆ The maximum bearing capacity of hinge is 70Kg.





| SPECIFICATIONS | OUTWARD OPENING | INWARD OPENING | FULLY REVERSIBLE | SINGLE&DOUBLE Leaf |
|--------------------------------------|------------------------|------------------------|----------------------|----------------------|
| Performance&Accreditation | | | | |
| U-value(Double Glazing) | 1.4W/m²K | 1.6W/m²K | 1.7W/m²K | 1.7W/m²K |
| U-value(Triple Glazing) | 1.2W/m²K | 1.2W/m²K | - | - |
| Window Energy Rating(WER) | B-C | B-C | npd | npd |
| Green Guide Rating | A+ - A Rated | A+ - A Rated | B Rated | npd |
| Acoustic Performance(dB) | RW (C;Ctr) 42(-1;-5)dB | RW (C;Ctr) 42(-1;-5)dB | npd | npd |
| Air Tightness(Pa) | Class 4 | Class 3 | Class 4 | Class 4 |
| Water Tightness(Pa) | Class 9a | Class 9a | Class 6a | Class 7a |
| Wind load(Pa) | Class E2400 | Class E2400 | Class 5 | Class E2400 |
| Security | Kitemarked to Pas 24 | Kitemarked to Pas 24 | Kitemarked to Pas 24 | Kitemarked to Pas 24 |
| Secured By Design | Yes | Yes | Yes | Yes |
| Configurations | | | | |
| Opening | Open Out | Open In | Open out | Open In & Open Out |
| Top Hung | • | - | - | - |
| Side Hung | • | - | - | - |
| Bottom Hung | • | - | - | - |
| Fixed Light | • | • | • | • |
| Multilight | • | - | - | - |
| Tilt&Turn | - | • | - | - |
| Life Time Homes(LTH) | - | • | - | - |
| Tilt&Slide | - | • | - | - |
| Top Swing | - | - | • | - |
| Side Swing | - | - | • | - |
| Size Limits | | | | |
| Max Vent Weight | - | - | - | 90Kg |
| Top Hung | 90Kg | - | - | - |
| Side Hung | 55Kg | - | - | - |
| Bottom Hung | 60Kg(3 Hinges) | 100Kg | - | - |
| Fixed Light | 250Kg | - | - | - |
| Tilt&Turn | - | 100Kg | - | - |
| Life Time Homes(LTH) | - | 100Kg | - | - |
| Tilt&Slide | - | 100Kg | - | - |
| Top Swing | - | - | 60Kg | - |
| Side Swing | - | - | 50Kg | - |
| System Features | | | | |
| Frame Options | 58mm & 70mm | 58mm & 70mm | 70mm | 58mm & 70mm |
| Dual Colour Options | • | • | • | • |
| Multi-Point Locking | • | • | • | • |
| Glazing Options | Internal & External | Internal | Internal | Internal |
| Glazing Thickness | 24mm - 44mm | 24mm - 44mm | 28mm | 24mm - 44mm |