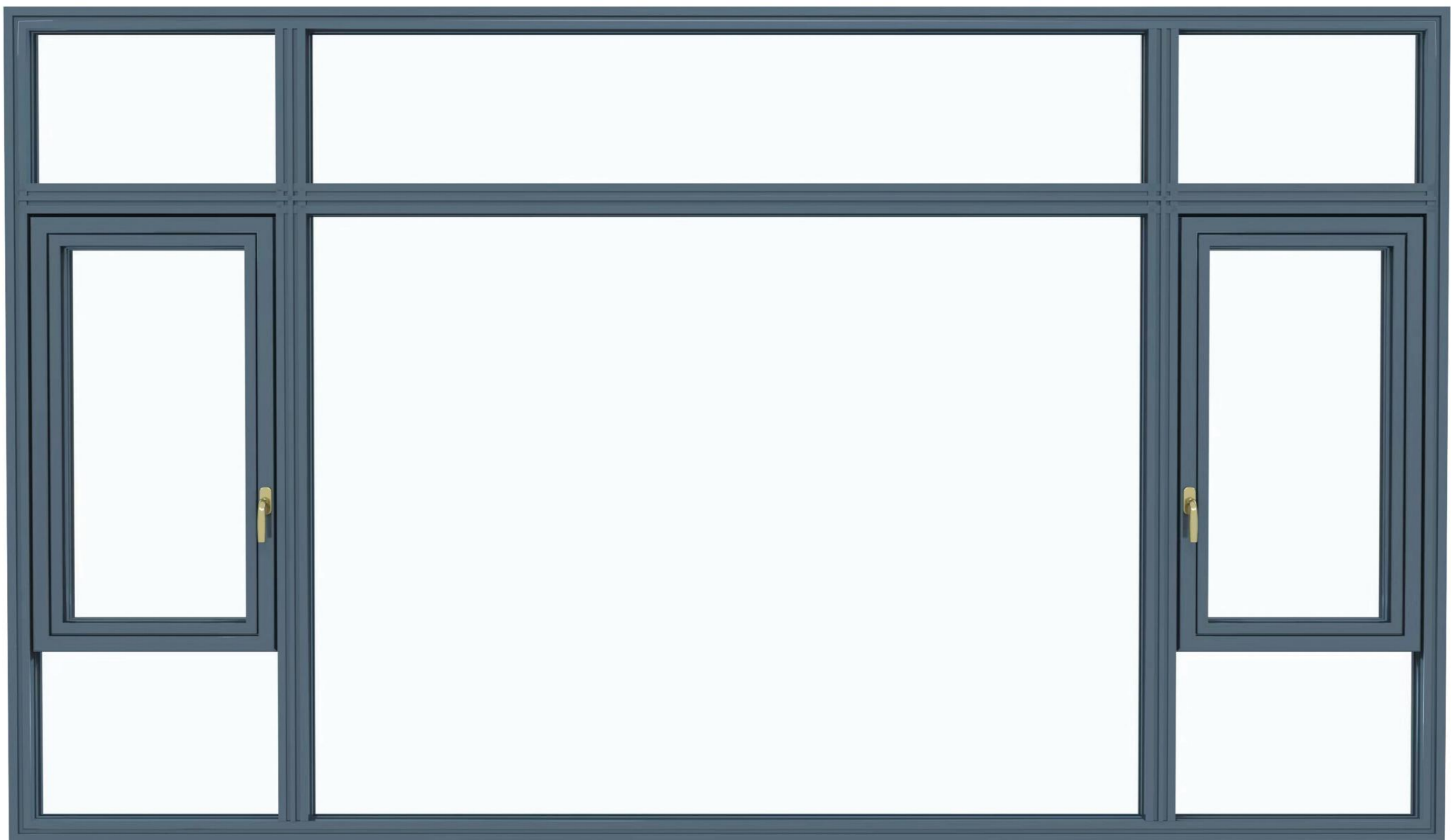




Sainty 110 series aluminum swing window

Full Name: Swing window with outdoor opening + 3 sealing locks 110mm wide +screen window with indoor opening+ 3 fixed lock system window



3 channels seal +6 silent locks (patent)

High transparent PET screen window (optional stainless steel mesh)

Pass American AAMA Canadian CSA standard test

Glass window sash with outdoor opening + screen window sash with indoor opening



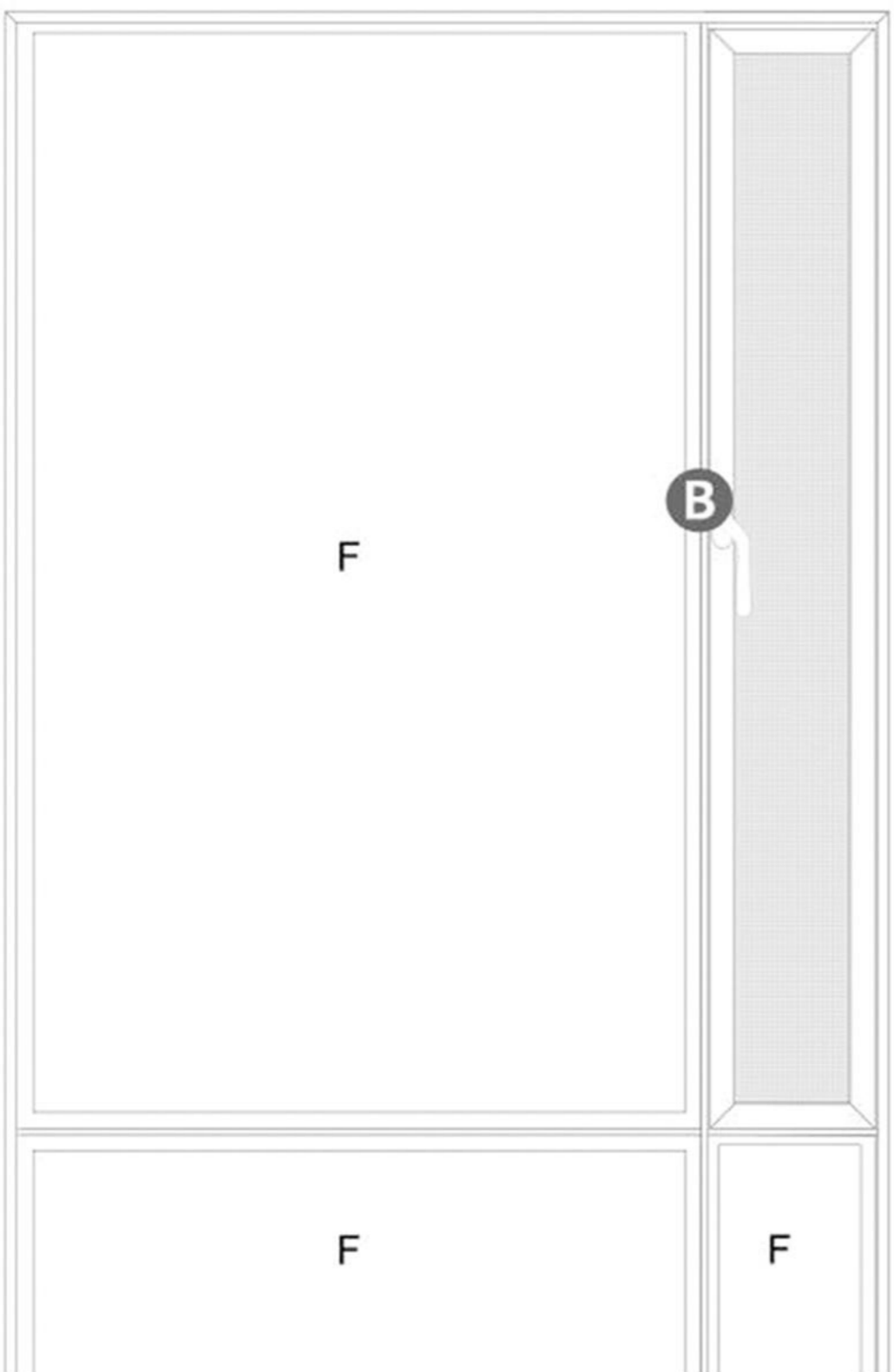
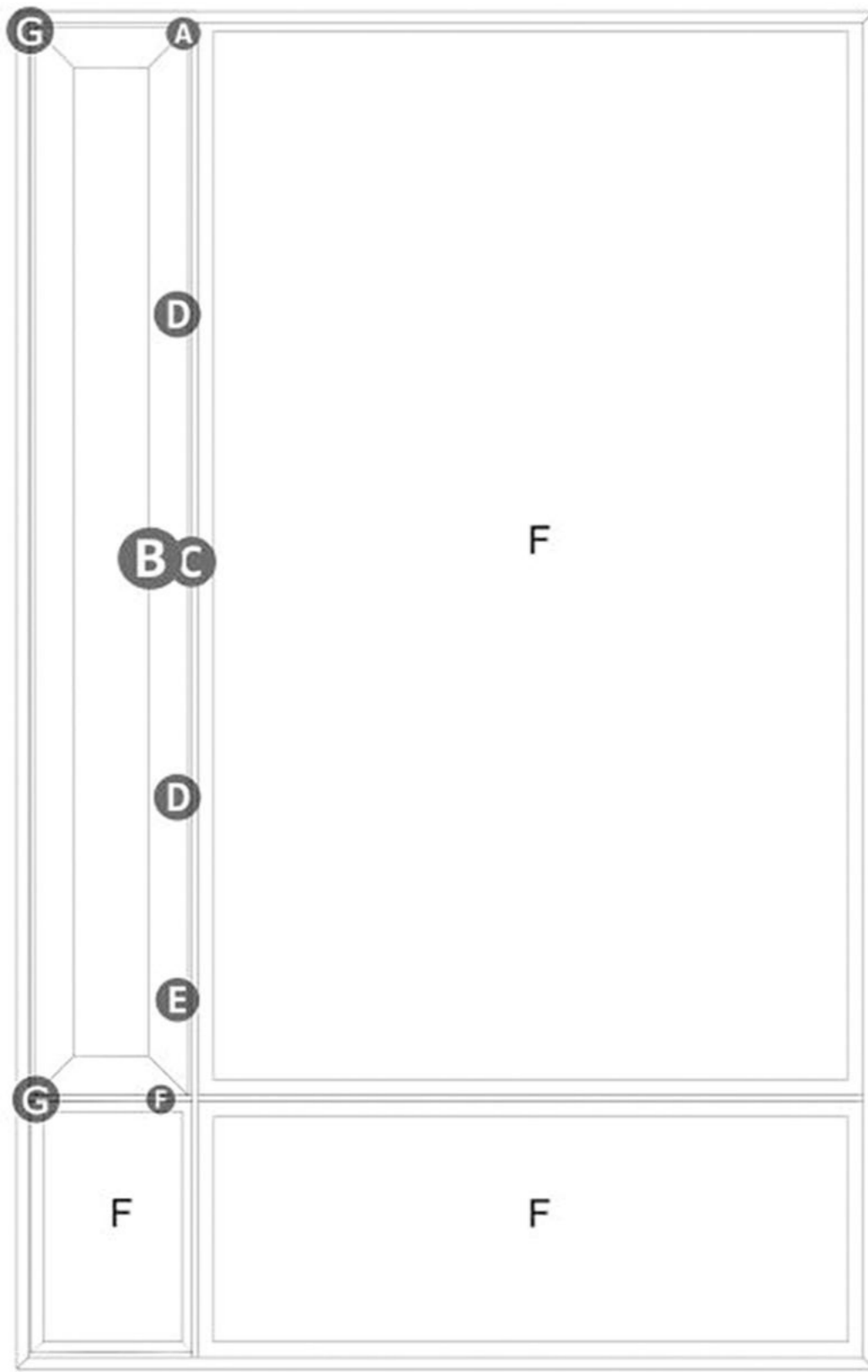
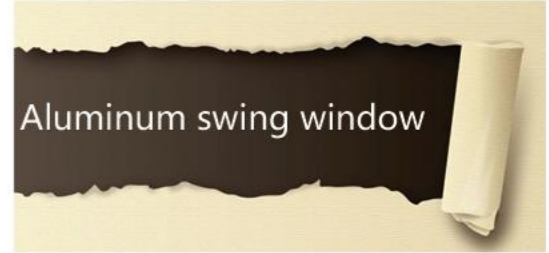


Sainty 110 series swing window

(Passed the test standards of American AAMA and Canadian CSA)

The outer opening fan is a handle system with high quality multi-point locking structure, while the inner opening fan is a 98% visible invisible screen window. The obvious difference with the 88 series is the two-way opening direction of the outer opening and the inner opening. The best three seals are adopted in sealing, thus ensuring the inimitable sound insulation and waterproof performance and high light transmittance.





A



Corner Device

B



Handle

C



Transmitter

D



Transmission Rod

E



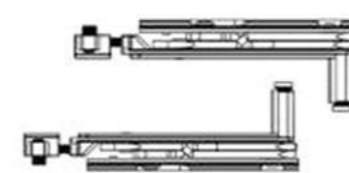
Bolt

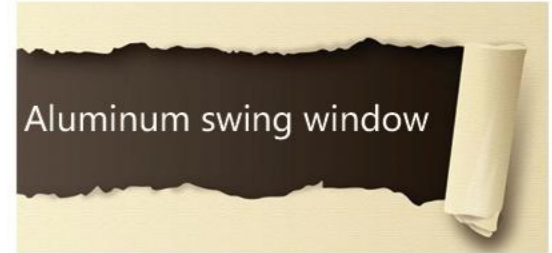
F



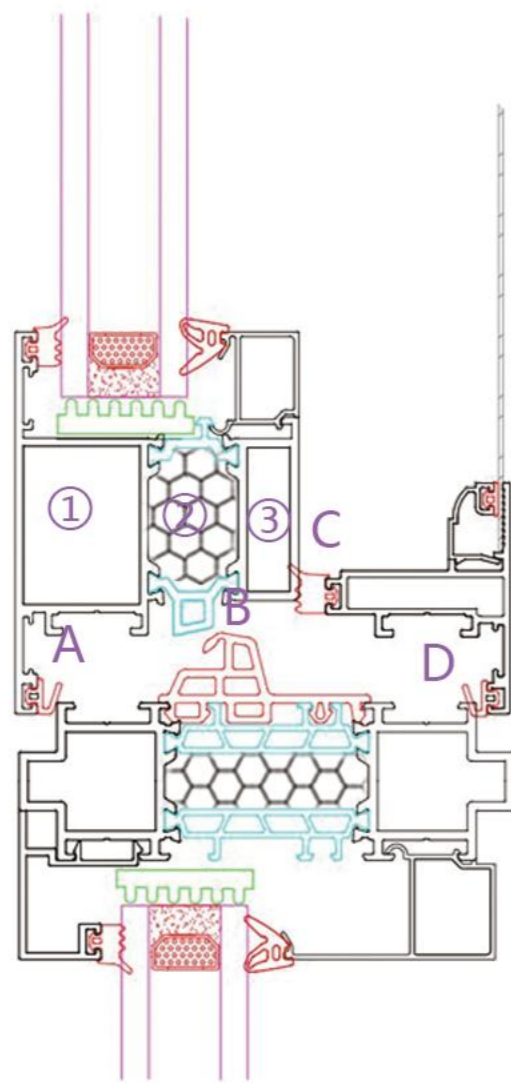
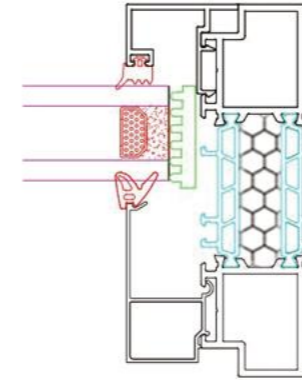
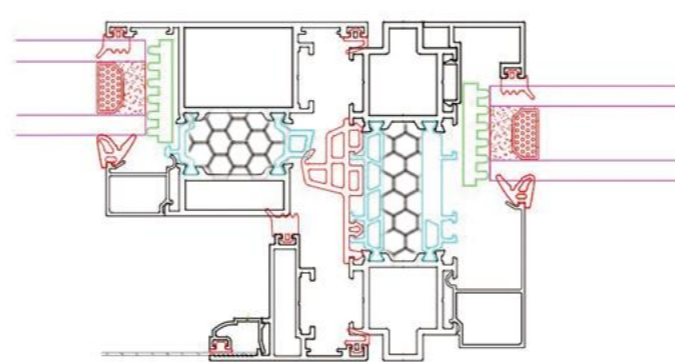
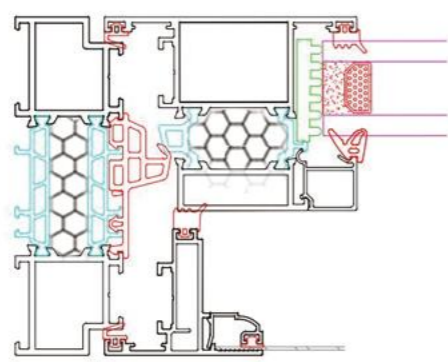
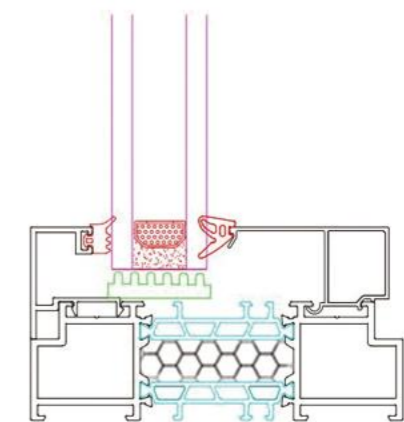
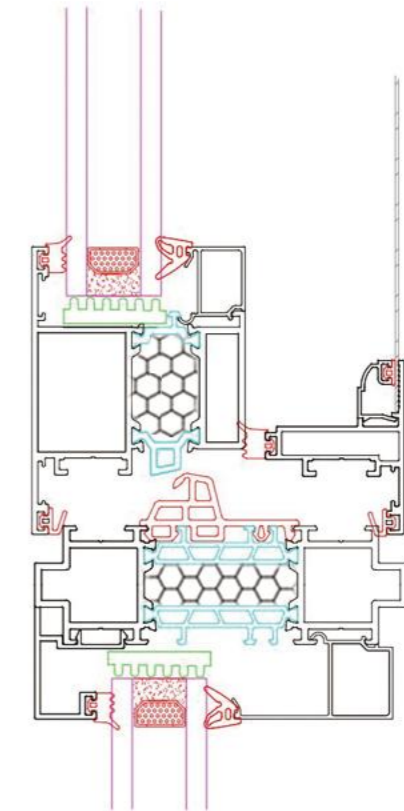
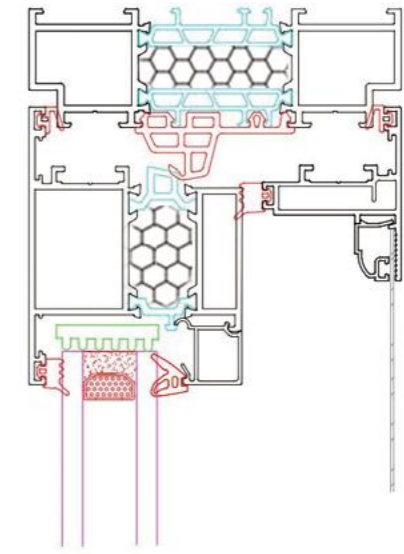
Anti-settling block

G





(Inside view)



1. ①②③ is the sound insulation cavity part, ① is the middle of the aluminum material for air, ② is the plastic foam, ③ is the middle of the aluminum material for air, by increasing the medium and cavity structure to achieve the effect of sound insulation and heat insulation.

2. ABCD is the waterproof part, and A is the closed part of the outer window frame and window sash. B is the intersection point of isobaric rubber strip (EPDM) designed inside window sash and window frame with heat insulation strip (PA) to form a certain enclosed space. C, D are the closed part of the inner screen window frame and sash. If it is A rainstorm outside, water may enter from the gap at point A due to the pressure, which will be blocked by the B end. The red arrow part will be opened as the drainage hole of the door and window to discharge water. In the event of extremely bad weather, the C and D





SPECIFICATIONS	OUTWARD OPENING	INWARD OPENING	FULLY REVERSIBLE	SINGLE&DOUBLE Leaf
Performance&Accreditation				
U-value(Double Glazing)	1.4W/m ² K	1.6W/m ² K	1.7W/m ² K	1.7W/m ² K
U-value(Triple Glazing)	1.2W/m ² K	1.2W/m ² K	-	-
Window Energy Rating(WER)	B-C	B-C	npd	npd
Green Guide Rating	A+ - A Rated	A+ - A Rated	B Rated	npd
Acoustic Performance(dB)	RW (C;Ctr) 42(-1;-5)dB	RW (C;Ctr) 42(-1;-5)dB	npd	npd
Air Tightness(Pa)	Class 4	Class 3	Class 4	Class 4
Water Tightness(Pa)	Class 9a	Class 9a	Class 6a	Class 7a
Wind load(Pa)	Class E2400	Class E2400	Class 5	Class E2400
Security	Kitemarked to Pas 24	Kitemarked to Pas 24	Kitemarked to Pas 24	Kitemarked to Pas 24
Secured By Design	Yes	Yes	Yes	Yes
Configurations				
Opening	Open Out	Open In	Open out	Open In & Open Out
Top Hung	•	-	-	-
Side Hung	•	-	-	-
Bottom Hung	•	-	-	-
Fixed Light	•	•	•	•
Multilight	•	-	-	-
Tilt&Turn	-	•	-	-
Life Time Homes(LTH)	-	•	-	-
Tilt&Slide	-	•	-	-
Top Swing	-	-	•	-
Side Swing	-	-	•	-
Size Limits				
Max Vent Weight	-	-	-	90Kg
Top Hung	90Kg	-	-	-
Side Hung	55Kg	-	-	-
Bottom Hung	60Kg(3 Hinges)	100Kg	-	-
Fixed Light	250Kg	-	-	-
Tilt&Turn	-	100Kg	-	-
Life Time Homes(LTH)	-	100Kg	-	-
Tilt&Slide	-	100Kg	-	-
Top Swing	-	-	60Kg	-
Side Swing	-	-	50Kg	-
System Features				
Frame Options	58mm & 70mm	58mm & 70mm	70mm	58mm & 70mm
Dual Colour Options	•	•	•	•
Multi-Point Locking	•	•	•	•
Glazing Options	Internal & External	Internal	Internal	Internal
Glazing Thickness	24mm - 44mm	24mm - 44mm	28mm	24mm - 44mm





— SAINTY — DESIGN PRODUCE INSTALL

PATENTED PRODUCT COUNTERFEIT WILL BE SUED

