



— SAINTY — DESIGN PRODUCE INSTALL

PATENTED PRODUCT COUNTERFEIT WILL BE SUED

PRODUCT DISPLAY

## *Sainty Framer-invisible Door*

Full name: Frame invisible door with wood panel/Glass



Without visible frame around the door

Installation of frame and door at the same time

Door and frame can be pre-assembled

Units are supplied with special hinge caps



## Sainty Framer-invisible Door

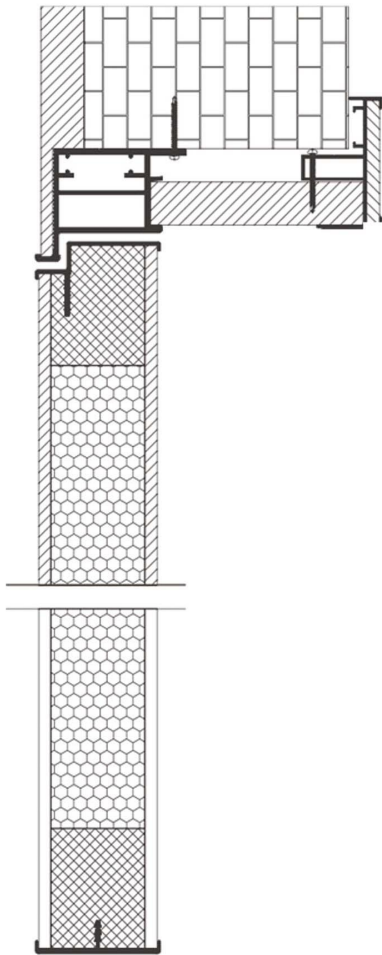
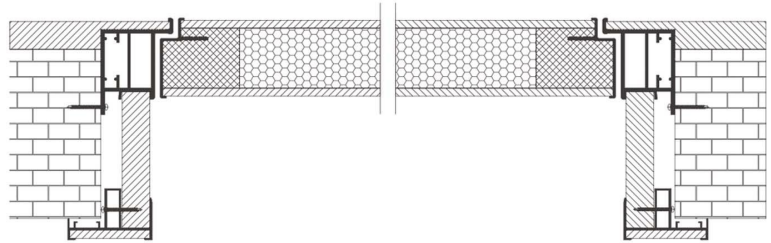
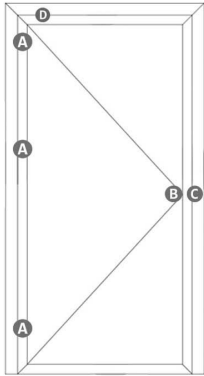
Modern concealed doors with aluminum invisible frame are already a classic in the interior design of modern rooms. Developing technological possibilities mean that hidden doors have not only a functional but also a decorative function. The accessories and finishes used allow the door leaf to be perfectly flush with the wall and to hide the door.

The possibilities of finishing the door leaves in the case of hidden doors may coincide with the material used on the wall. Paint, wallpaper, veneer or a mirror are an ideal base for creating a door flush with the wall surface. The perfect addition will be the door handles we propose, the colors of which will allow for matching to any finish of the sash. Hidden doors thus ensure that the designed interior is in order and offer unlimited possibilities of its adaptation, not only in a minimalist version.



— SAINTY — DESIGN PRODUCE INSTALL

PATENTED PRODUCT COUNTERFEIT WILL BE SUED

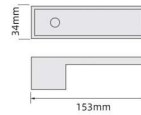


A



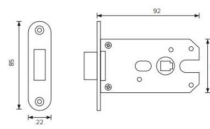
Hinges

B



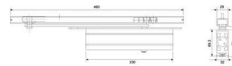
Handle

C

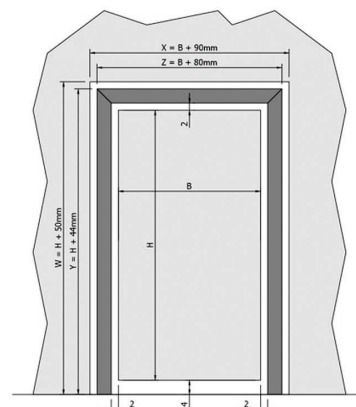
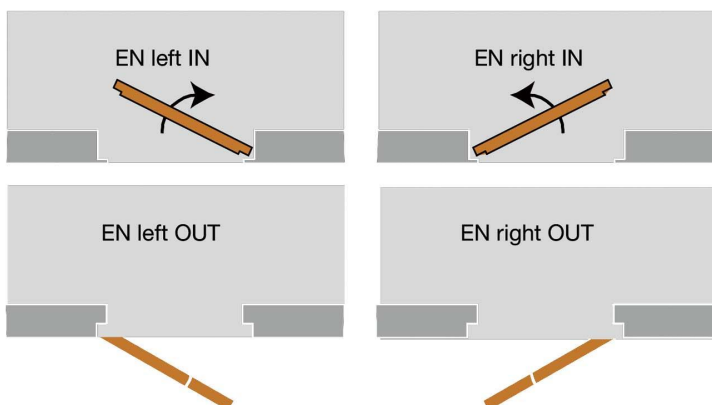


Lock

D



Door Closer



### Dimensions:

We generally recommend that the dimensions of the invisidoor 2.0 should be so selected as to ensure a clearance of 2 mm between the door panel (left, right and above), and the frame. A play of 4 mm is provided between the door panel (bottom) and the finished floor level.

Width of the door panel: B

Height of the door panel: H

### •Door frame profile

Z = Width of cut in the head jamb, including mitre 45° = W + 80 mm

Y = Height of saw cut for side jambs, including mitre 45° = H + 44 mm

### •Wall opening

X = Width of wall opening = W + min. 90 mm

W = Height of wall opening = W + min. 50 mm



— SAINTY — DESIGN PRODUCE INSTALL

PATENTED PRODUCT COUNTERFEIT WILL BE SUED

Invisible Door

