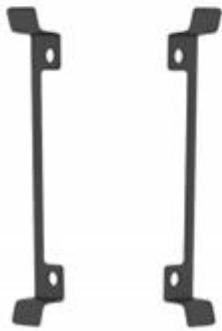


How to install the crank window?

1st Step, please check follow 5 items showed which assemble them in the crank window frame. follow pictures will show how to do step by step.



Handle Crank



Pull Tab



Silent Lock



Silent Lock Catch

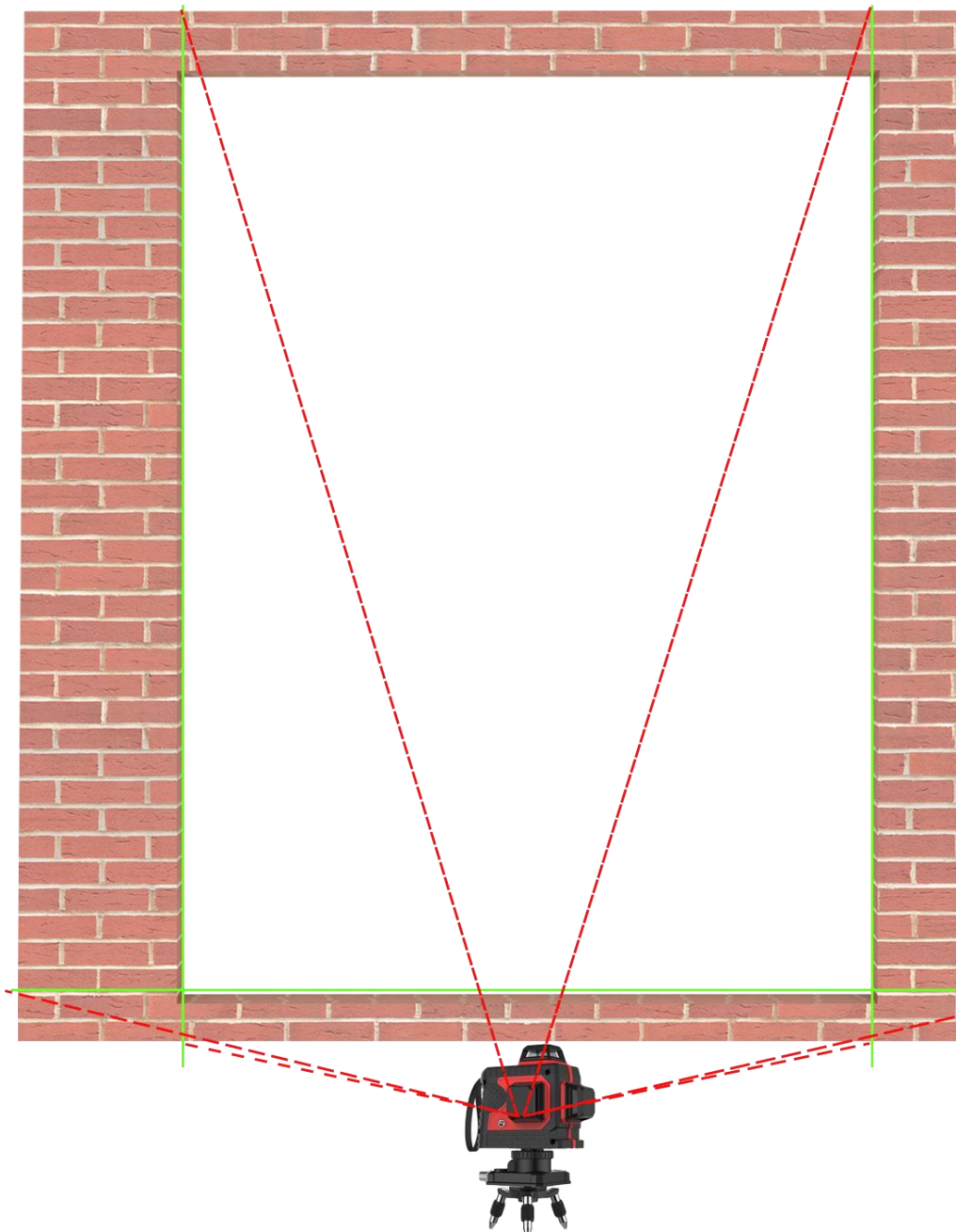


Concealed Hinge

Measuring the dimensions of window /Clean and Installation Step 1:

Adjust the laser level measuring instrument: Place the instrument on the reference plane or the tripod. After the machine is turned on, the laser flashing alarm will adjust the position of the instrument or fine-tune the tripod to make the instrument placement surface tend to level. The height of the instrument can be adjusted by shaking the handle or lifting the tripod.

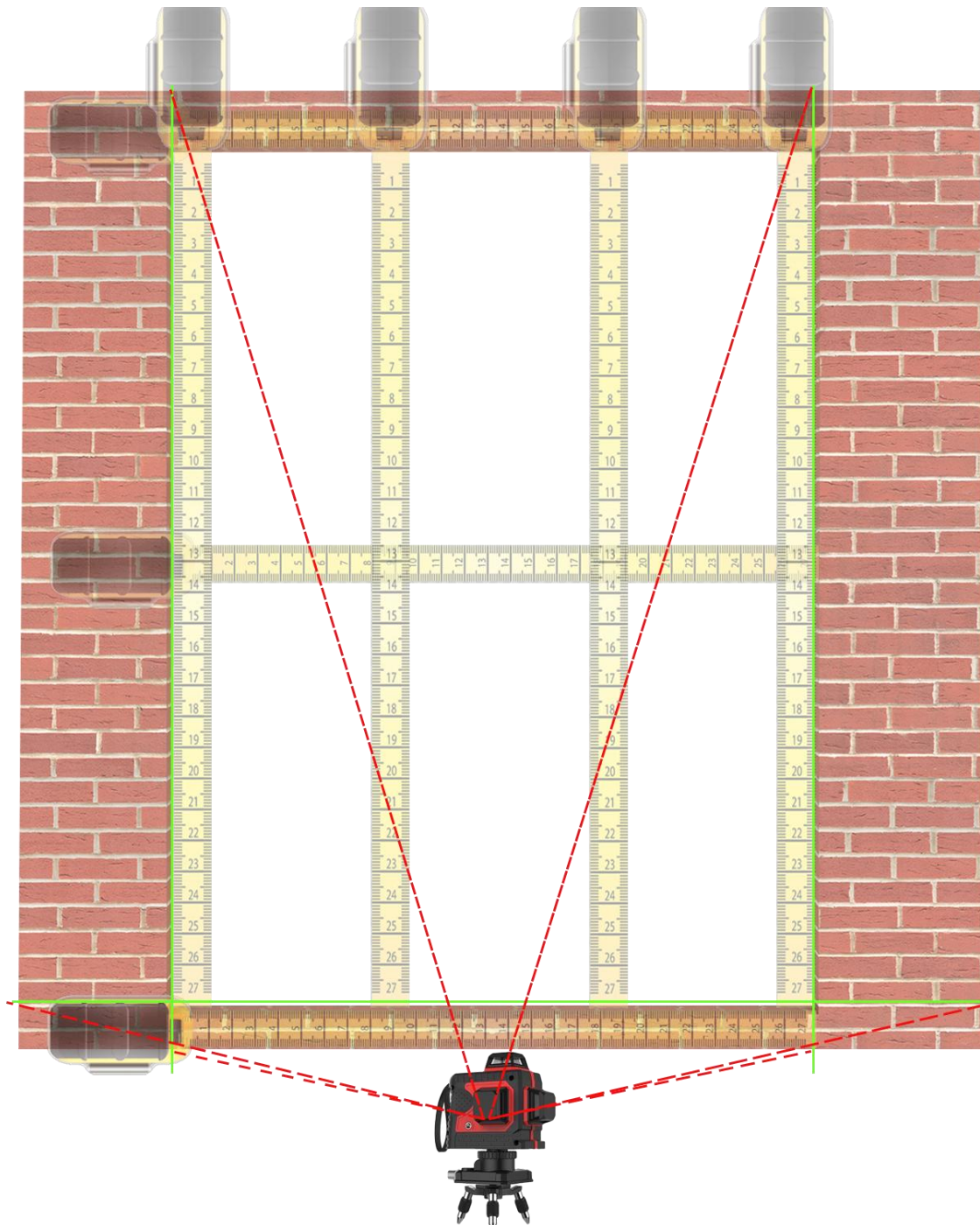
Measure operation: Rotate the switch to the ON position. Release the lock condition and turn on the power. At this time, the horizontal laser line and the vertical laser line will be lit and projected on the target. Rotate the instrument horizontally so that the vertical laser line falls in the desired position. Turn off the power after the operation is complete.



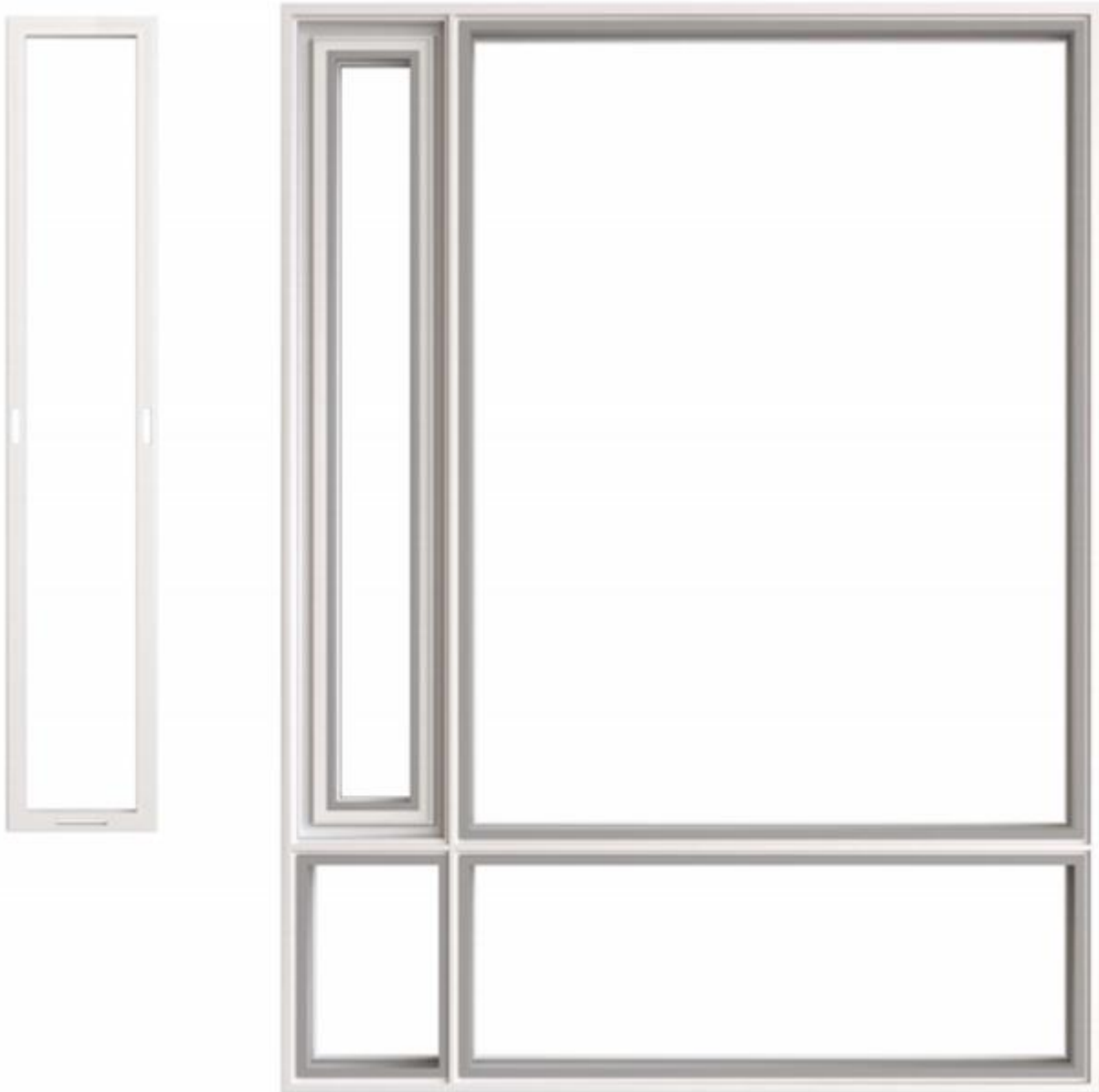
Measuring the dimensions of window /Clean and Installation Step 2:

According to the measurement result of the level measuring instrument, the size is measured several times and the minimum value is taken.

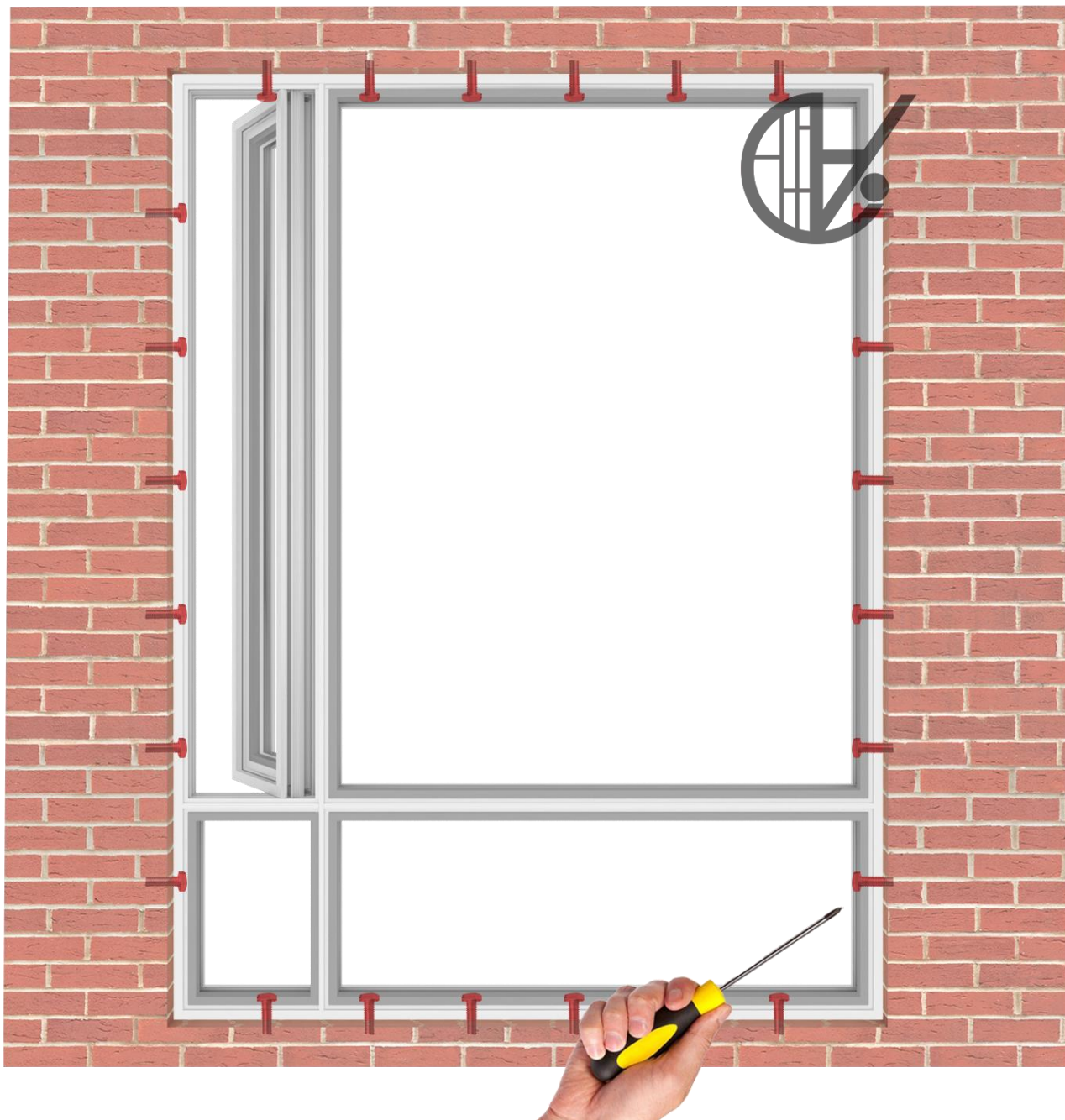
The measurement results are compared with the production size, and the uneven wall surface is cleaned and trimmed.



2nd Step, After unpacking, remove the fly screen window frame first (assemble it later) and clean the wall, start to screw the big frame into wall.



3rd step, Using the mounting screws of 5*40mm to fixed (In the first container) the big frame in the wall, or other specifications screws provided by the customer himself(it depend the wall conditions made by cement/ steel/wood) Just make sure the big frame will be fixed in the wall strongly.



4th Step-1, Assemble the window opening sash and fixed. According to the opening sash tightness, the bottom + top in turn debug the concealed hinge of the crank window opening sash.



4th Step-2, Be noted: The concealed hinges can be fixed after debug. Drilling hole with 32mm extended drill bit(Prepared by the client himself), then fixed with 4*16mm flat stainless steel screws(loaded in the first container).



5th Step, Preparing the following accessories to install the fly screen window frame:hand crank +standard screw package +silent lock accessories 1#1 set+silent lock(all in the third container)+5*22mm round head stainless steel screw (in the forth container).



6th step, Opening the hand crank and align the screw hole , fixed with the 5*10mm screws in the standard screw package.



7th Step, Remove the wrapping paper from the fly screen window frame and install the silent lock with attachment 1# 1 set+5*22mm round head stainless steel screw.



8th Step , Insert the silent lock in the direction of the picture.



9th Step-1, Fix the pull tab with screws.



9th Step-1, Fix the pull tab with screws.



9th Step-2, The fixed screen Window.



10th Step-1, Install the fly screen window frame with the silent lock on the crank window, and fix the fly screen window frame with 4*50mm dovetail nails (In the first container).



10th Step-2, Assemble the window opening sash track. Opening the hand crank and check the inside position first, then fix the track on the window sash frame.



10th Step-3, The inside position is according the drawing.



10th Step-4, Factory has made the installation connection hole installed it with long cross head (supplied by the customer)And fixed it with 4*12-16mm round head stainless steel screws(the first cabinet has been delivered).



11st Step-1, Install the silent lock catch(stainless steel lock catch attachment 2in the third container). The position of the lock catch corresponds to the opening of the strip. Adjust the position with the adjustment screws (4*16mm flat head stainless steel screw) and fix the adjustment screw before drilling the fixed hole.



11st Step -2,According the same as previous one.



12nd Step-1, Drilling hole with 3.2mm extended drill bit(Prepared by the client)then fixed with 4*16mm flat stainless steel screws(In the first container) assemble the other side in the same way.



12nd Step-2, According the same as previous one.



13rd Step, After assemble the track,roll the crank window back to adjust the hand crank Checking the tightness of the open fan and adjust the position of the handle.



14th Step-1, Folding the glass adjust board (In the first container) into two pads, place them on the frame sash.



14th Step-2, Put the glass on the glass adjust board, put the glass pad into the frame, and clamp the glass adjust board into the upper side of the glass for fixing.



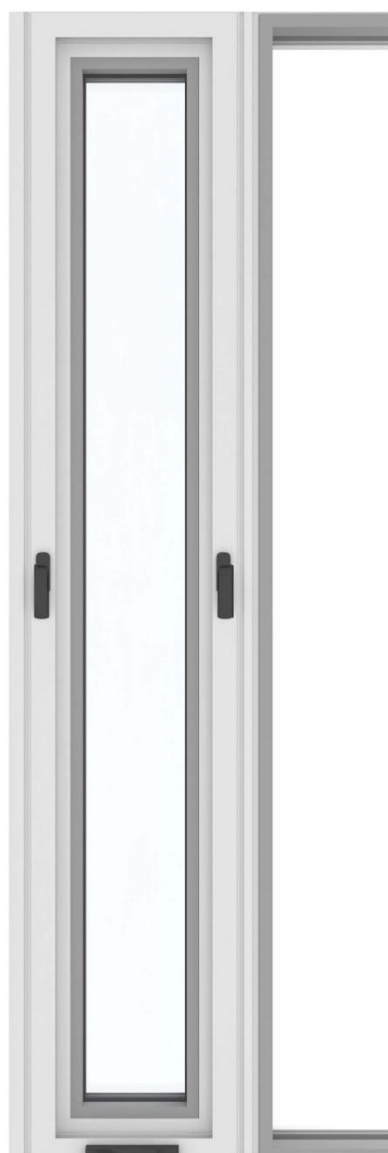
14th Step-3, Install the upper, left and right side glass stop back to their original positions, and finally install the lower glass stop.



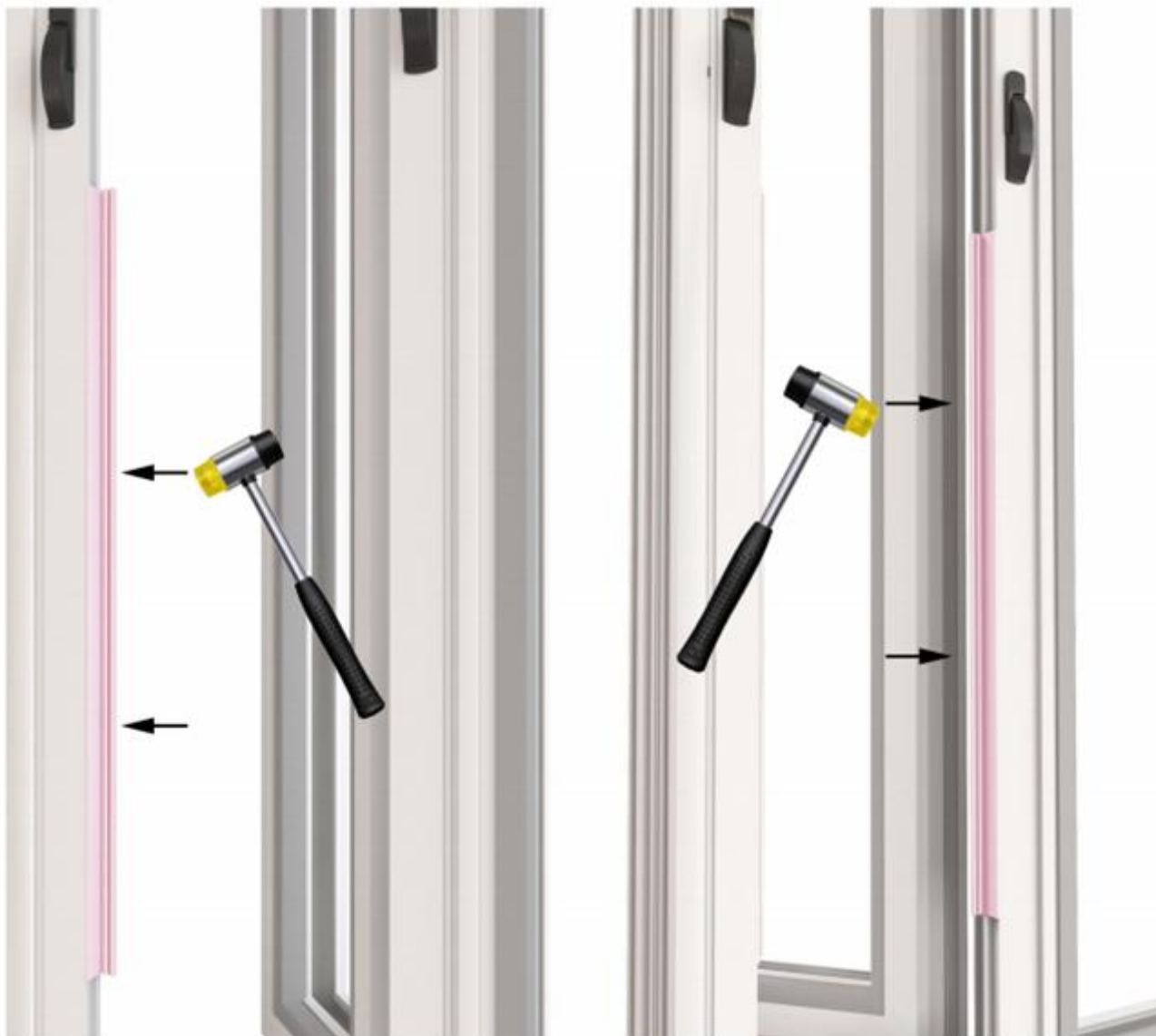
15th Step-1, Cut a small section of EPDM Int-Seal glazing gasket into the lower glass stop. Then the whole glazing gasket is taken and pressed into the middle of the glass stop and the glass. When passing through the lower part, the small section need to be taken out.



15th Step-2, After the glazing gasket is flattened all the way round, cut off the excess parts with scissors and press the last part.



16th Step-1, Then install the fly screen baffle on both sides.



16th Step-2, Install the fly screen fan on the baffle.



[Click here for installation Video](#)