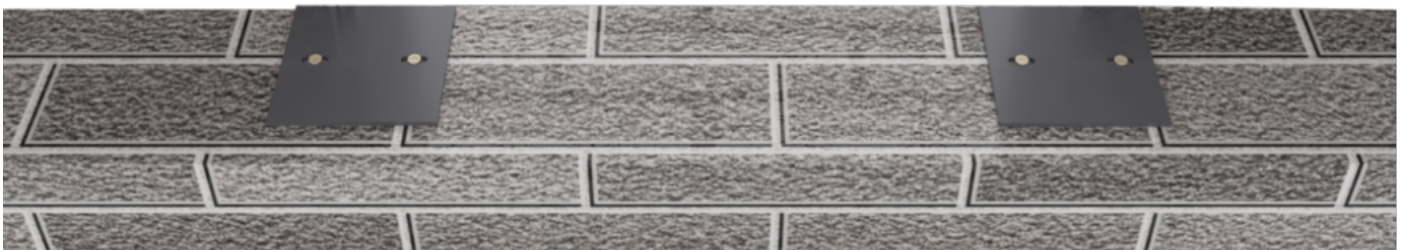
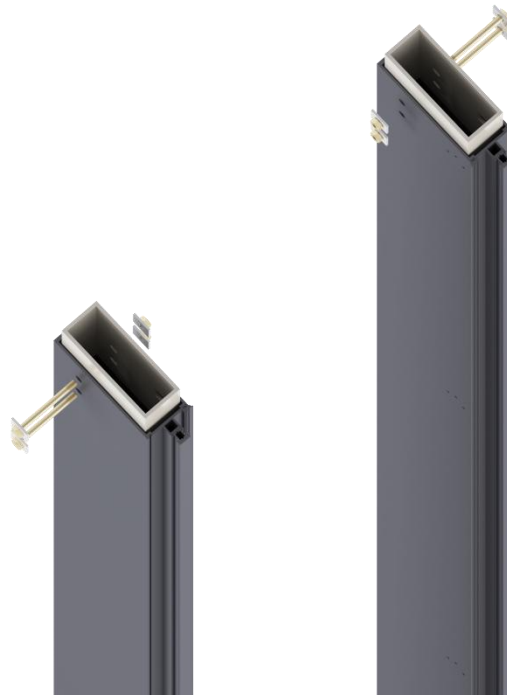


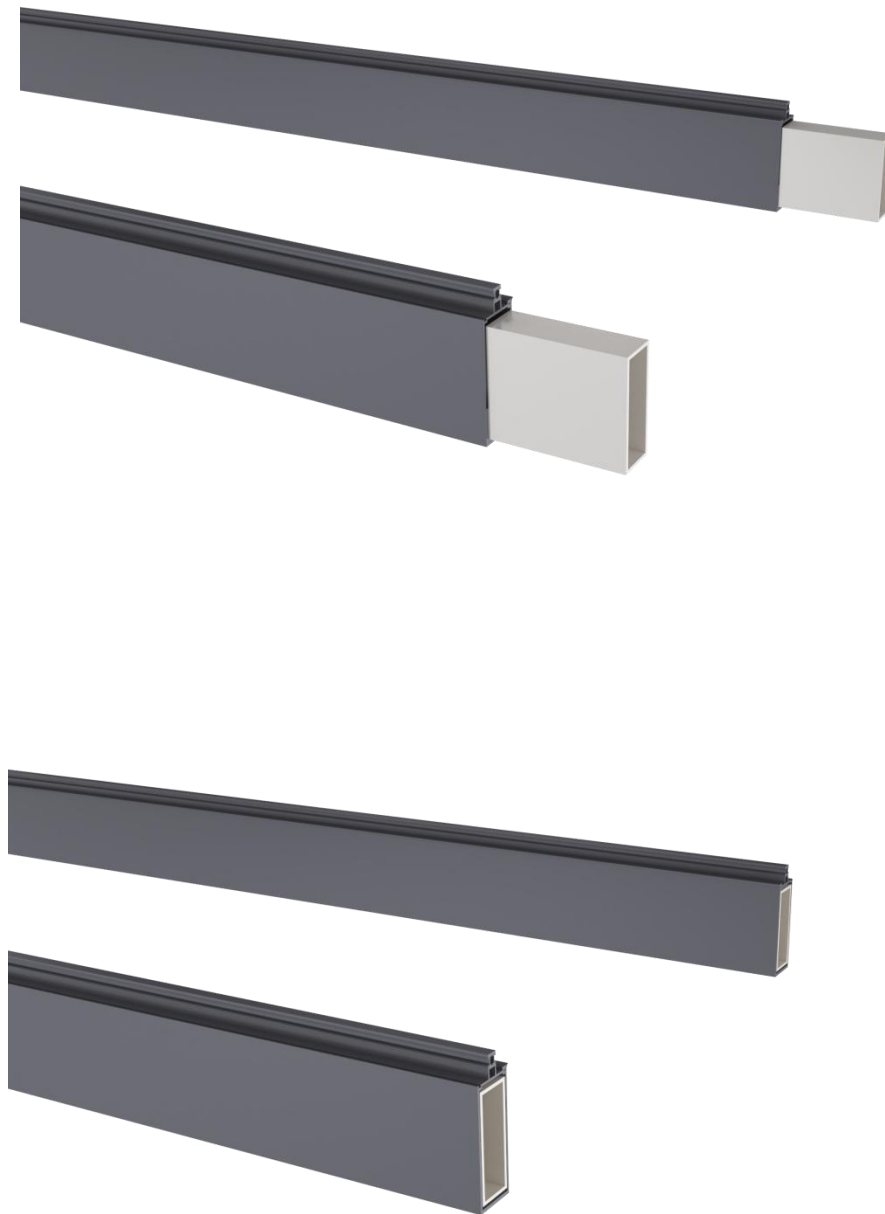
1. Determining the length and position of the bottom plate. Mounting expansion bolt after confirm the position of plate.



2. Inserting the top core into the column, and fix it with bolts without tightening first.



3. inserting the core at the bottom and insert the column.



4. Mounting column

Adjust the horizontal and weld the bottom core with the bottom plate first.



Tighten the top column bolts on both sides, and then weld the top core with the embedded parts.



5. Mounting beam

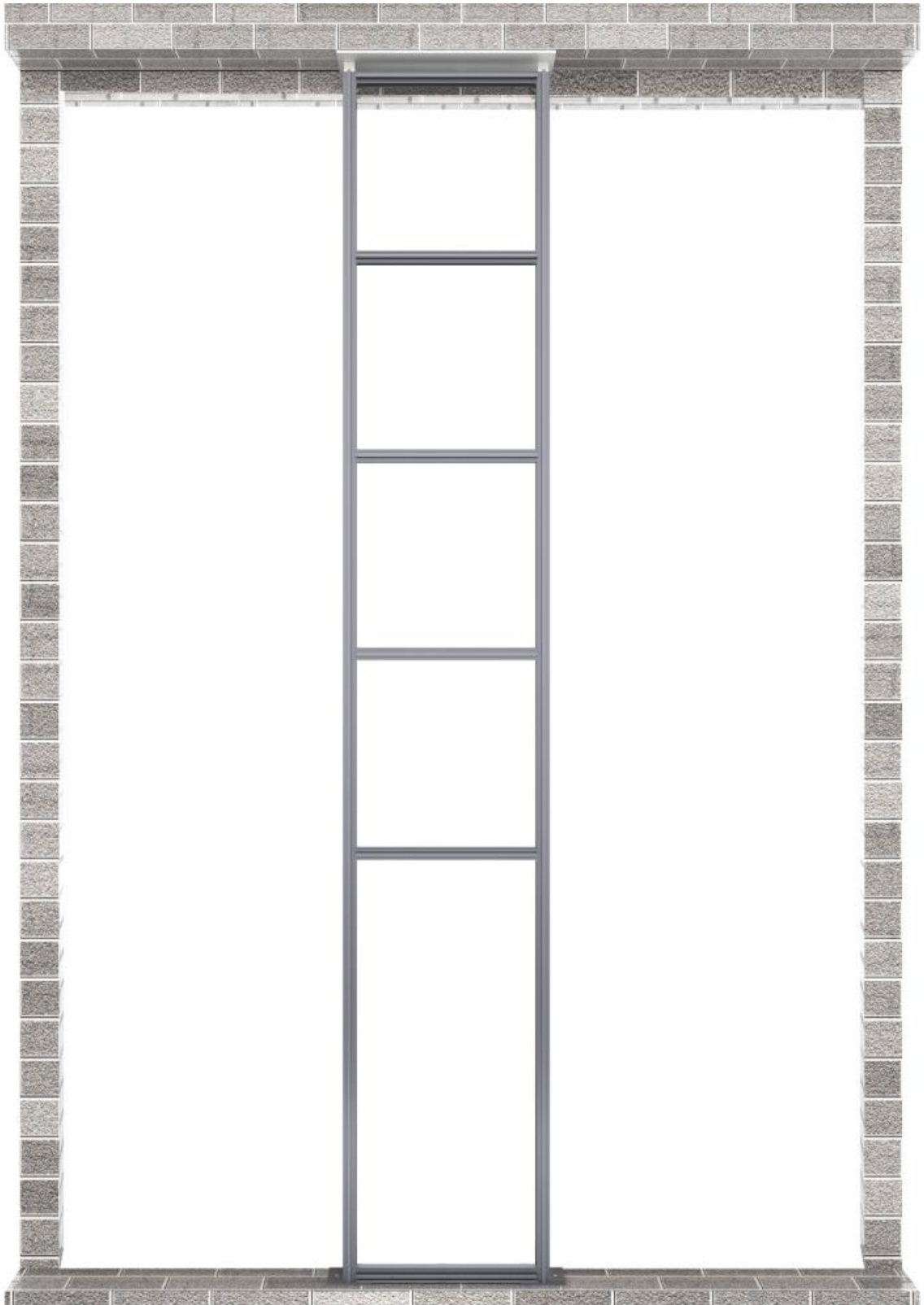
Install and fix the corner code on both sides of the beam (corner code holes coincide with the hole of the beam, and fix with screws)



Find the horizontal and hole corresponding coincidence, fix the beam and column with screws.



Repeat the preceding steps to install the remaining beams.



6. After the beam is installed, install all the corresponding cover plates.



7. Install the glass.



8. Install the glass bottom platen

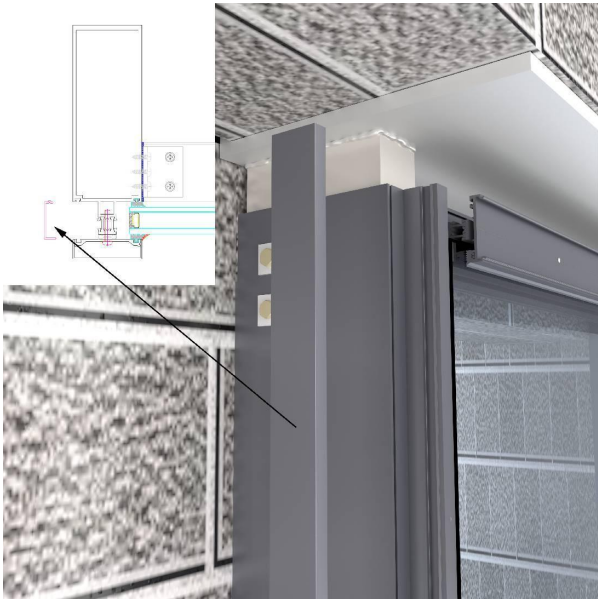


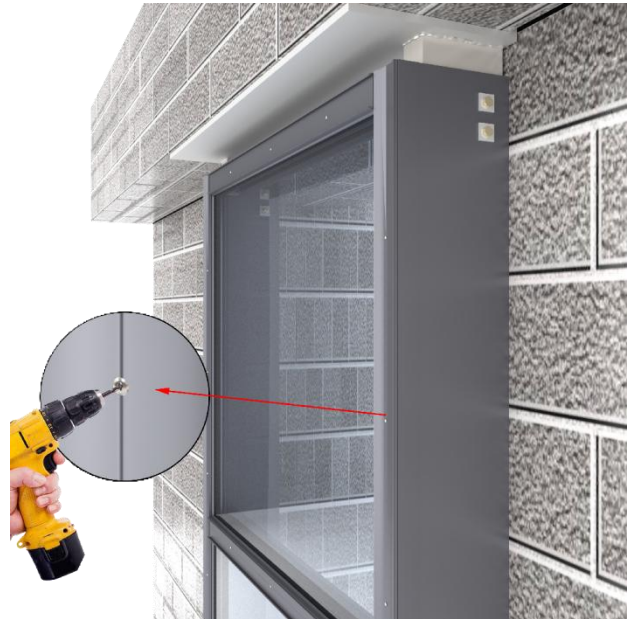
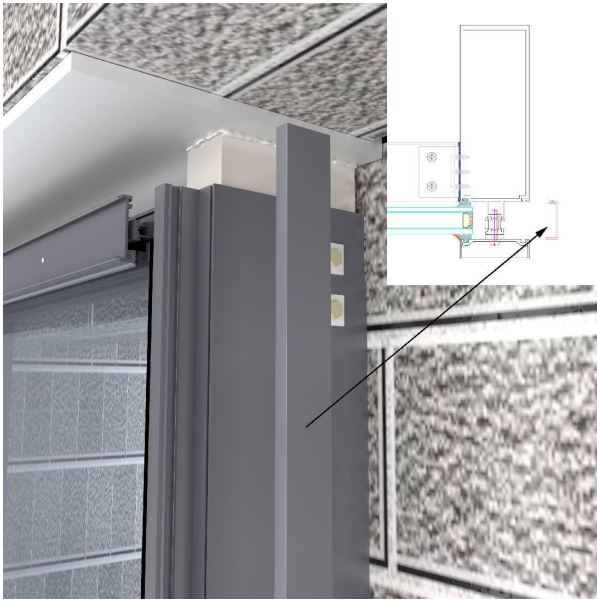


Install the glass bottom platen and then secure the glass top platen (then repeat above to install all the glass and platen from the bottom up).

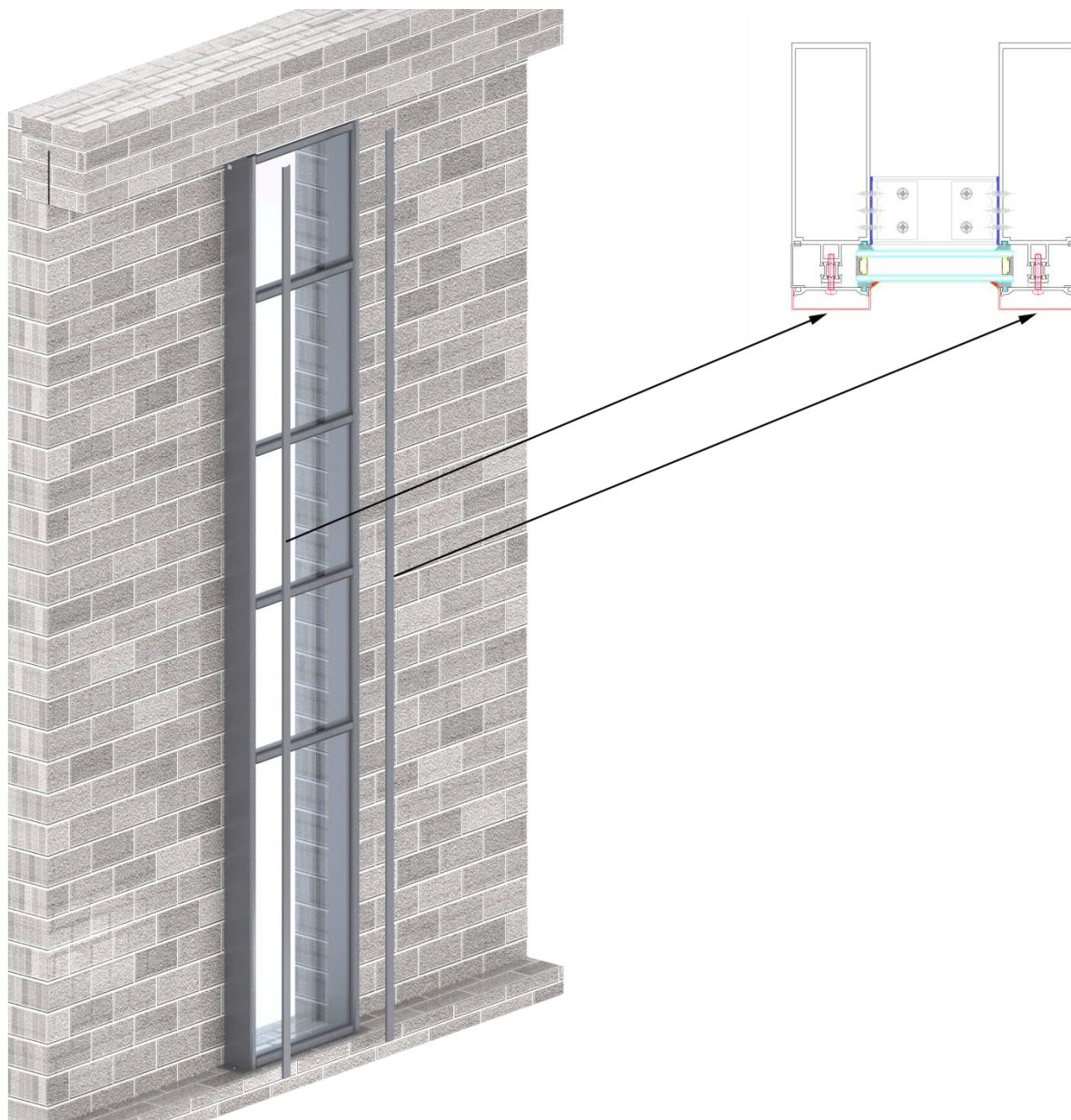


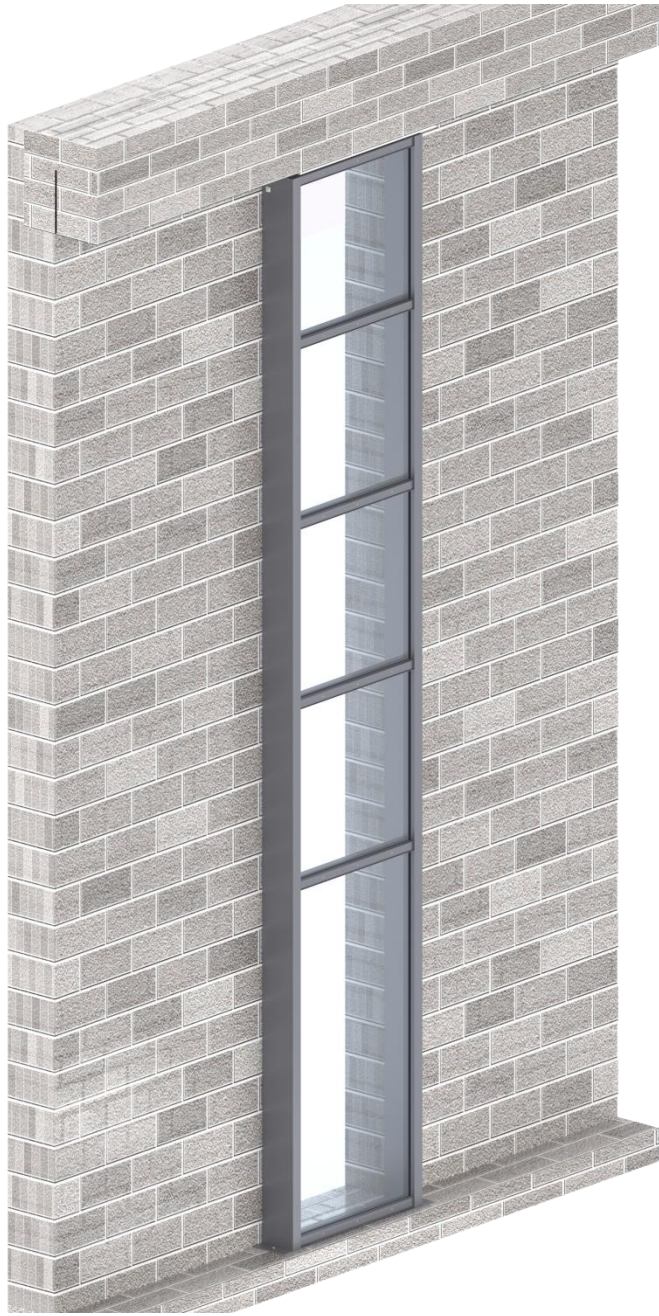
9. Install the column press plate on both sides.





10. Install cover plates on both sides of the column.





11. Install cover plates at corresponding positions of all beams (finish).

